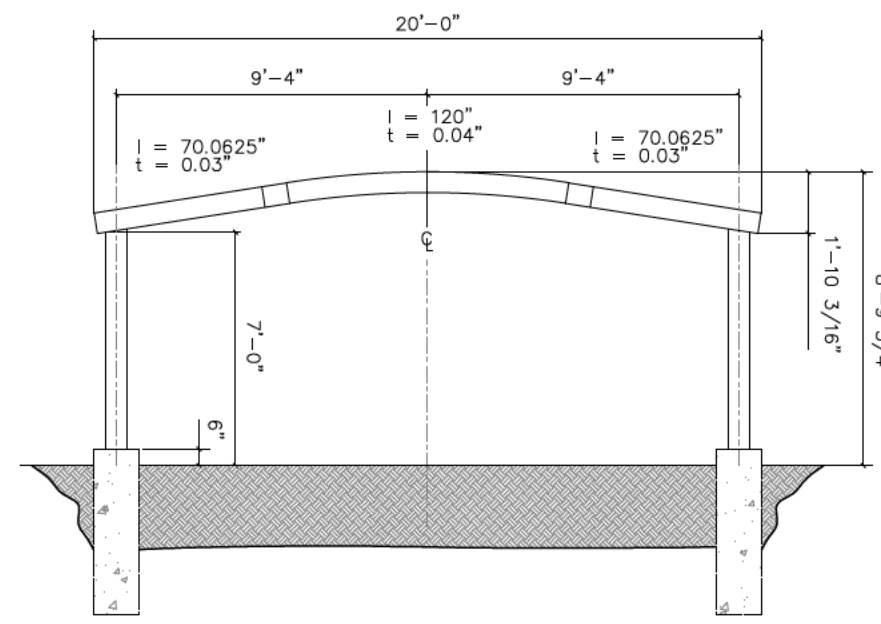
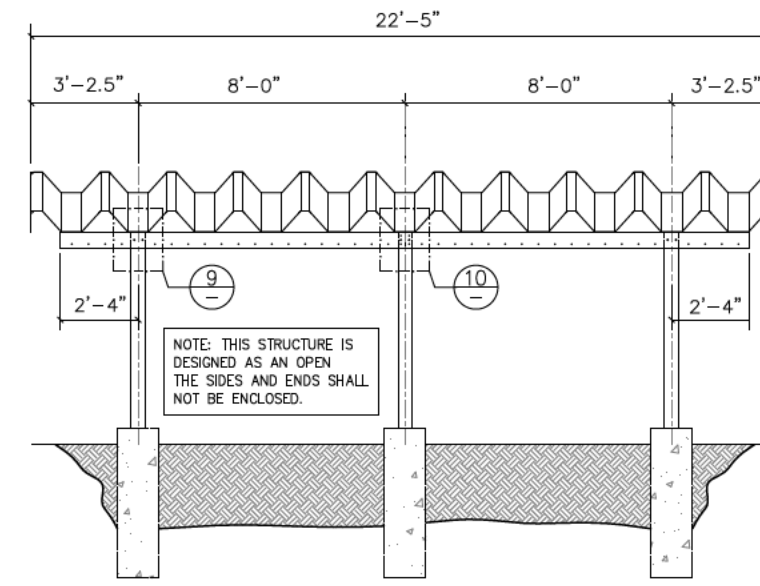


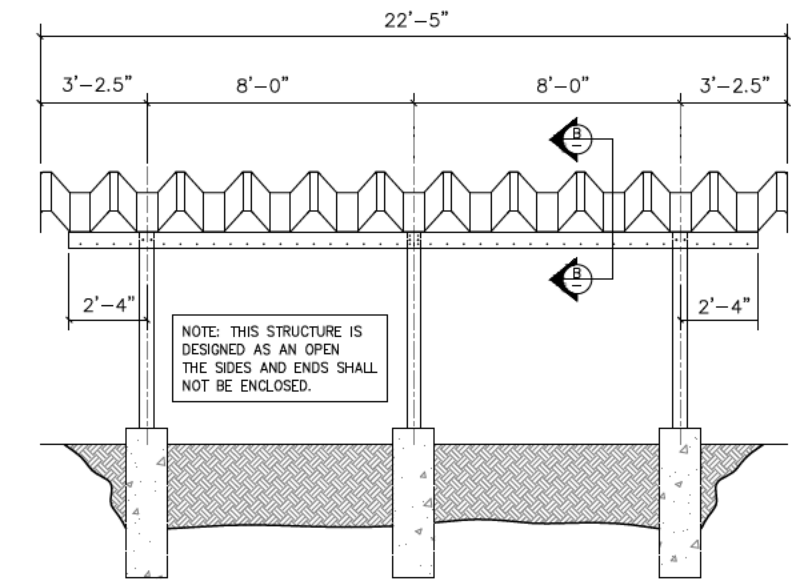
1 FRONT ELEVATION



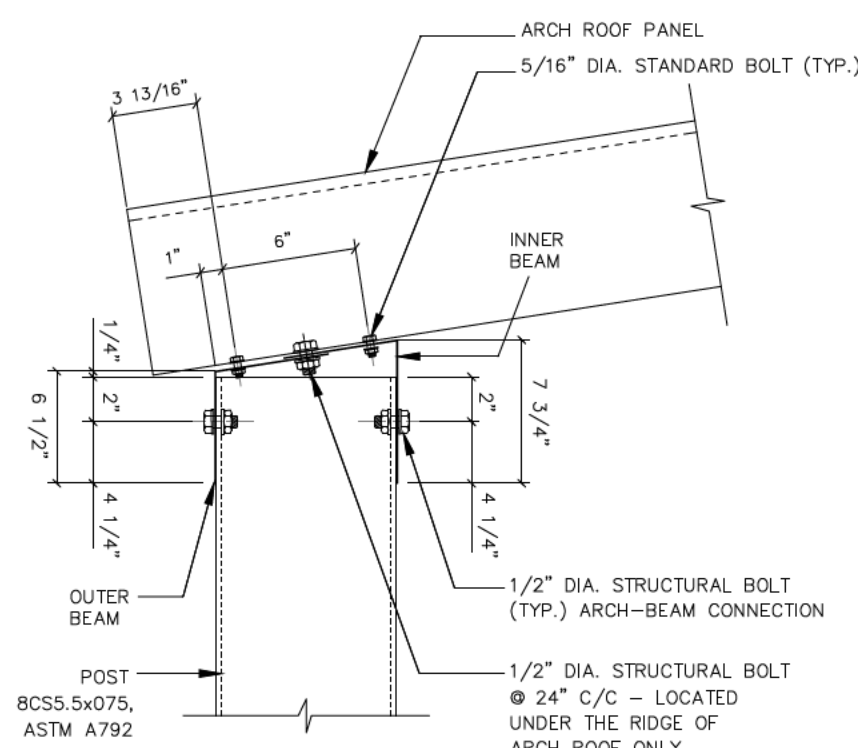
2 REAR ELEVATION



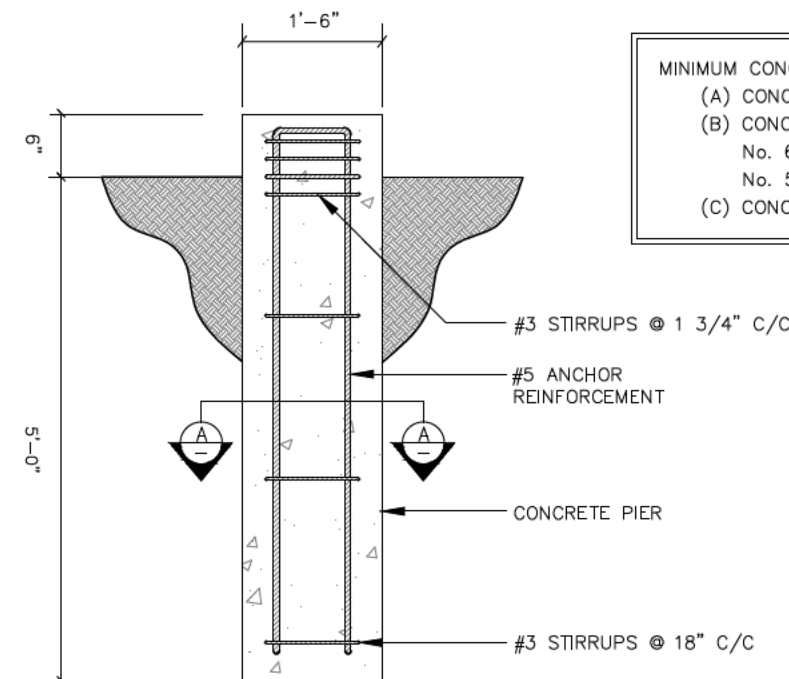
3 LEFT ELEVATION



4 RIGHT ELEVATION



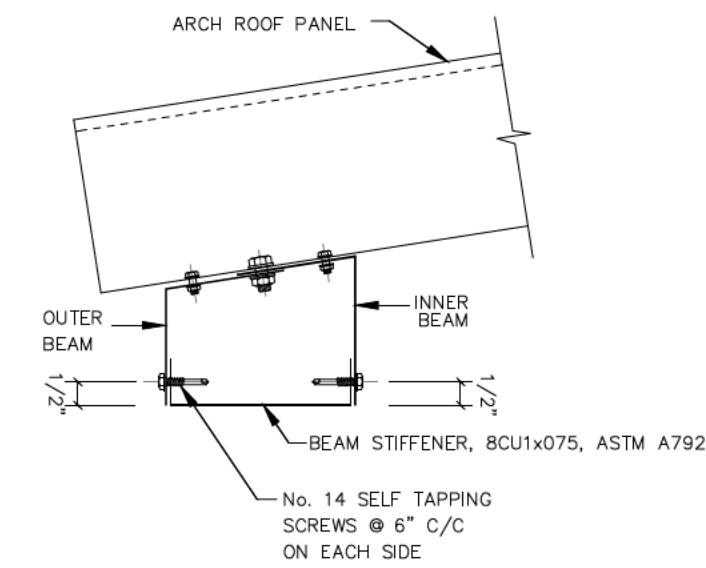
5 TOP OF POST CONNECTION



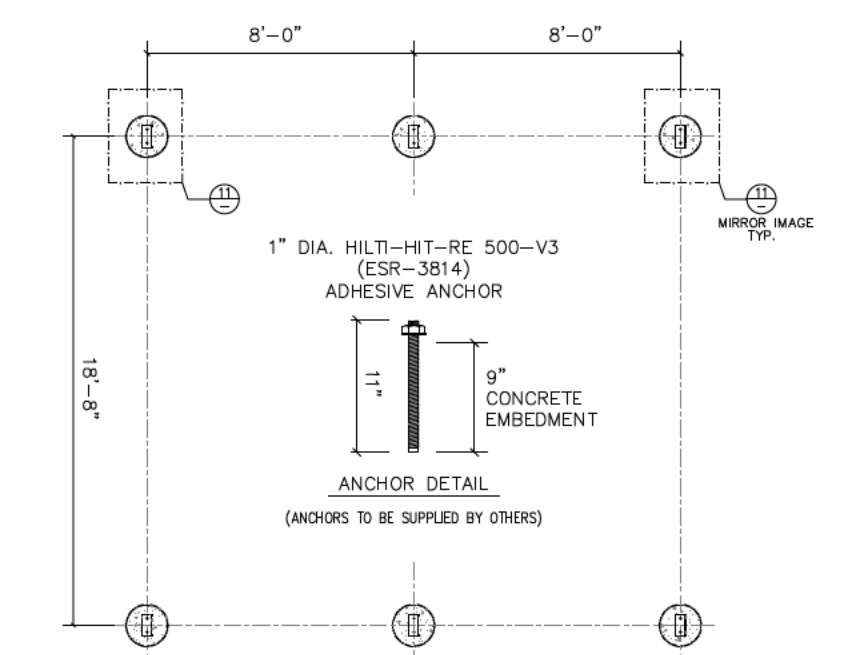
7 CONCRETE PIER DESIGN

MINIMUM CONCRETE COVER:	
(A) CONCRETE CAST AGAINST EARTH:	3"
(B) CONCRETE EXPOSED TO EARTH OR WEATHER: No. 6 THROUGH No. 10 BARS:	2"
No. 5 BAR AND SMALLER:	1.5"
(C) CONCRETE NOT EXPOSED TO EARTH OR WEATHER:	0.75"

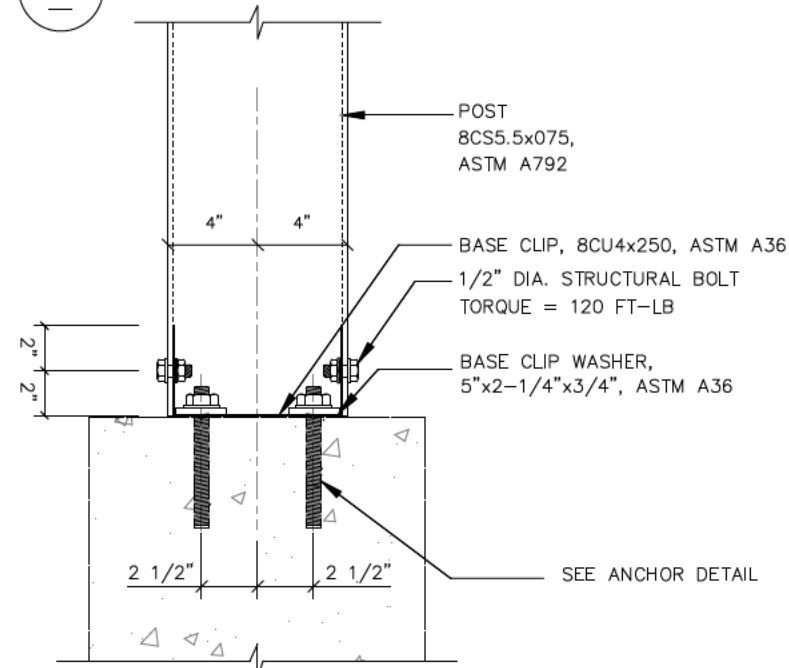
A CONCRETE PIER REBAR PLAN



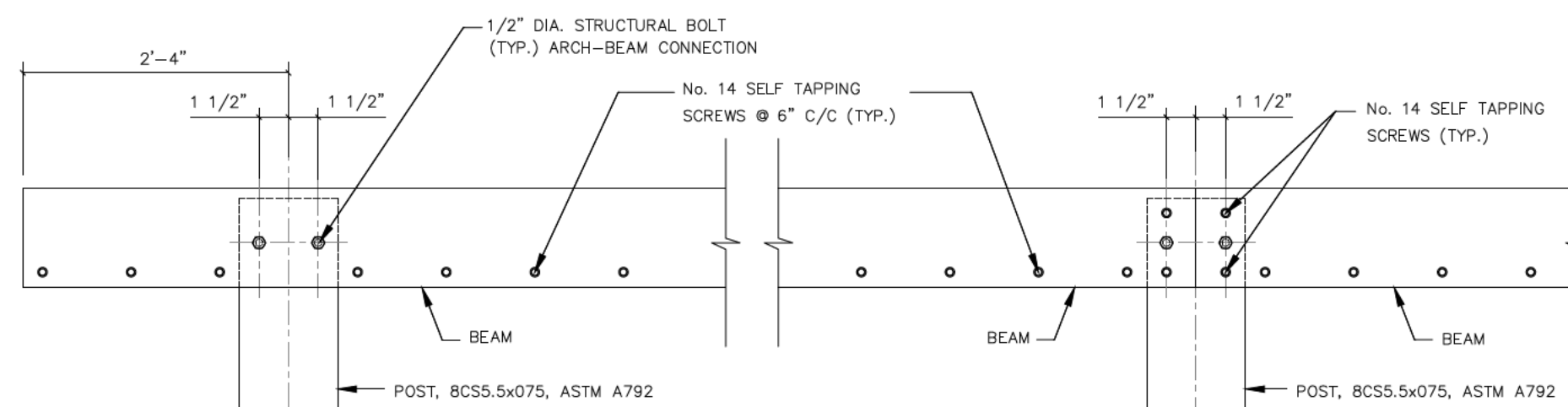
B BEAM PROFILE



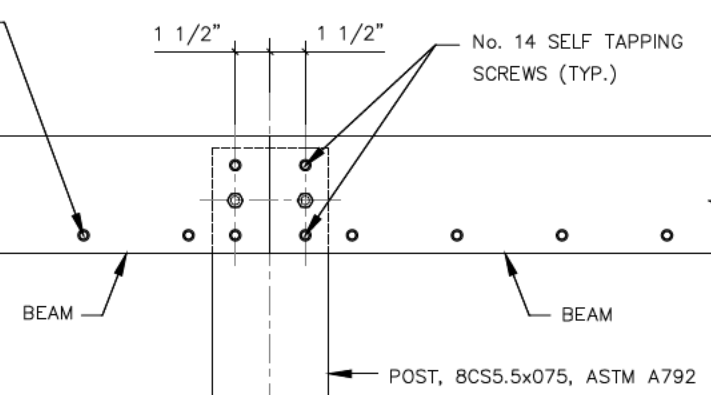
8 COLUMNS/BASE PLATES/ANCHOR BOLTS LAYOUT



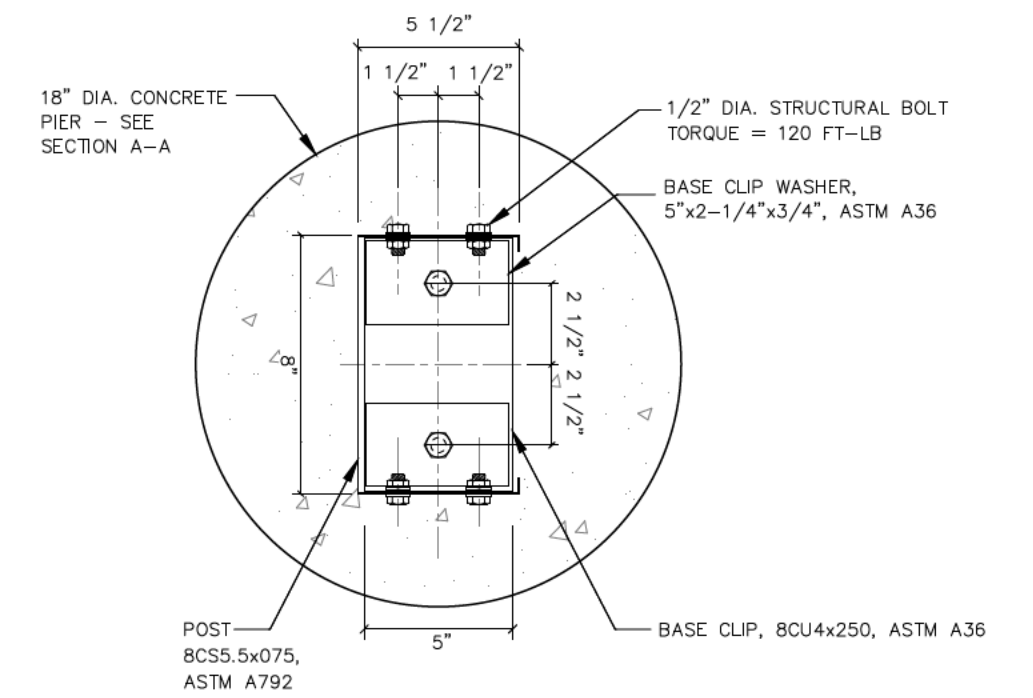
6 BASE OF POST CONNECTION



9 END BEAM CONNECTION



10 MIDDLE BEAM CONNECTION



11 POST BASE / PIER CONNECTION

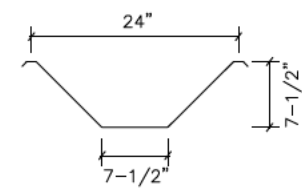
GENERAL NOTES

- ALL MATERIAL AND WORKMANSHIP SHALL CONFORM WITH THE REQUIREMENTS OF THE LATEST REVISION OF THE IBC 2018 & CBC-19. DESIGN ACCORDING TO AISI S100-16W/S1-18 NORTH AMERICAN SPECIFICATION FOR THE DESIGN OF COLD-FORMED STEEL STRUCTURAL MEMBERS, AND WITH ANSI/ASCE 7-16.
- NO LOADS OTHER THAN THOSE GIVEN UNDER "ARCH DESIGN DATA" BESIDE SHALL BE IMPOSED ON THE "STRUCTURE".
- SPECIFIC NOTES AND DETAILS SHOWN ON THE DRAWINGS SHALL TAKE PRECEDENCE OVER THE BUILDING MANUAL SUPPLIED.

FOUNDATION NOTES

- THE STRUCTURAL DESIGN OF THIS CAR PORT IS BASED ON ASSEMBLY IN EXACT ACCORDANCE WITH ERECTION PLANS & INSTRUCTIONS. FAILURE TO FOLLOW THESE PLANS SHALL BE THE SOLE RESPONSIBILITY OF THE ERECTOR.
- A PROFESSIONAL ENGINEER SHOULD BE RETAINED WHERE SITE INSPECTIONS ARE WARRANTED.
- NO COMPONENTS MAY BE CUT OR MODIFIED UNLESS IT IS IN ACCORDANCE WITH MANUFACTURER'S INSTRUCTIONS AND/OR THIS DRAWING.
- MINIMUM SEPARATION FROM THIS CAR PORT TO ANY TALLER BUILDING MUST BE THE SMALLER OF 20FT OR 6 TIMES THE HEIGHT DIFFERENCE.

ARCH DATA



DESIGN DATA (MATERIALS)

CONCRETE f'_c - 2500 PSI @ 28 DAYS ACI
REINFORCING STEEL GRADE 40, F_y = 40 KSI,
ASTM A615